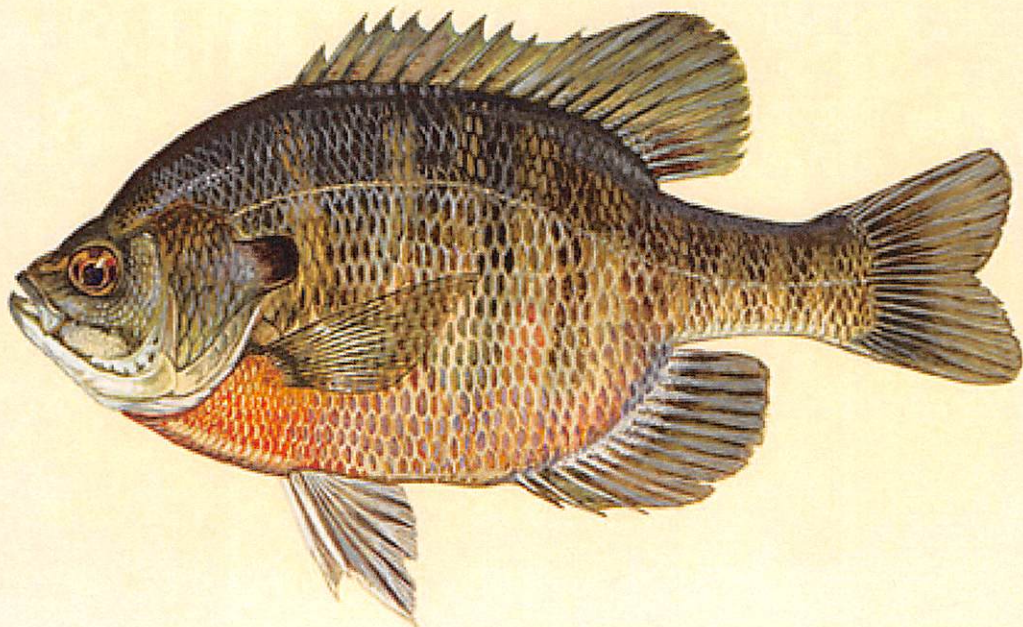


BLUEGILL SUNFISH

NO LENGTH LIMIT

NO CREEL LIMIT

The bluegill is common in Kansas, and provides many youngsters with their first fishing thrill. Because bluegill can be fed a supplement of dry pellets, they will reach large sizes up to 10". The high densities of predators which control the numbers and the supplemental feeding program will create a unique panfishing opportunity that produces bluegills in excess of 8".

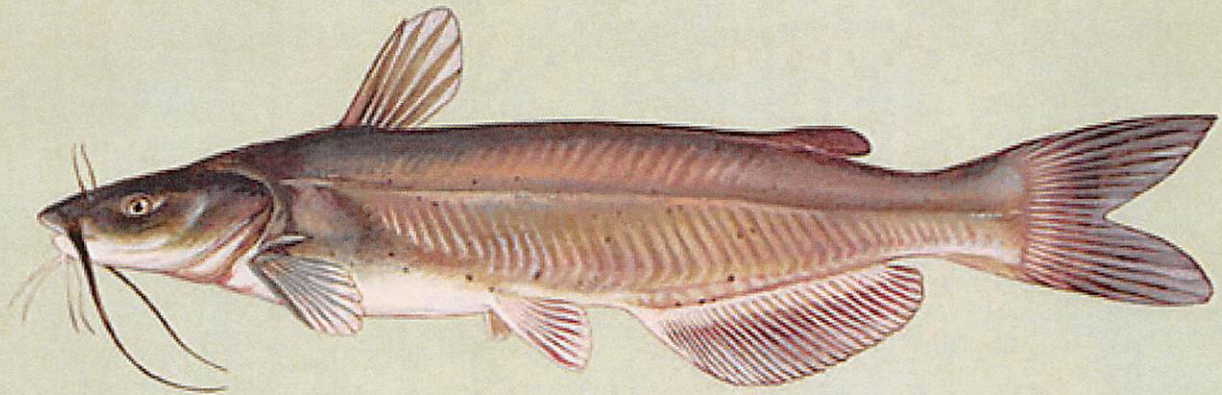


CHANNEL CATFISH

15" MINIMUM LENGTH LIMIT

2 PER DAY CREEL LIMIT

The channel catfish is the bread and butter of Kansas fishing. Supplemental feeding allows them to grow to very large sizes. Fish in excess of 20 pounds have been caught. Stocking of catfish is done each year to maintain a quality population with good harvest.



CRAPPIE

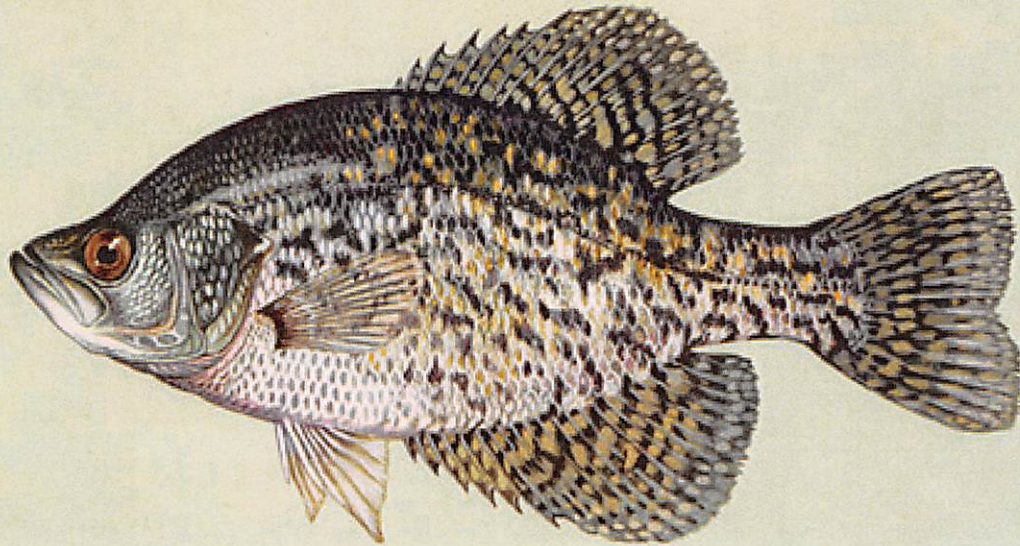
YC RESERVOIR

NO LENGTH LIMIT - 20 PER DAY CREEL LIMIT

SOUTH OWL LAKE

10" LENGTH LIMIT - 10 PER DAY CREEL LIMIT

Black crappie are not as wide spread in Kansas as the white crappie. The black is more suited for clear water and small impoundments. The regulations and the large amount of habitat will allow for good production and offer great panfishing opportunities every year.

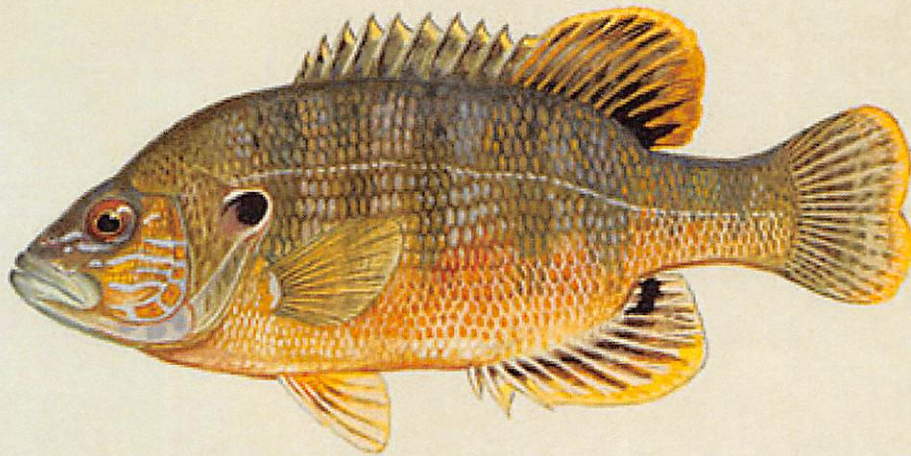


GREEN SUNFISH

NO LENGTH LIMIT

NO CREEL LIMIT

The green sunfish is the most common sunfish in Kansas and is found in almost every body of water. Green sunfish prefer rocky habitats along the shoreline. The green sunfish is distinguished from the bluegill by having a much larger mouth, more basslike.



LARGEMOUTH BASS

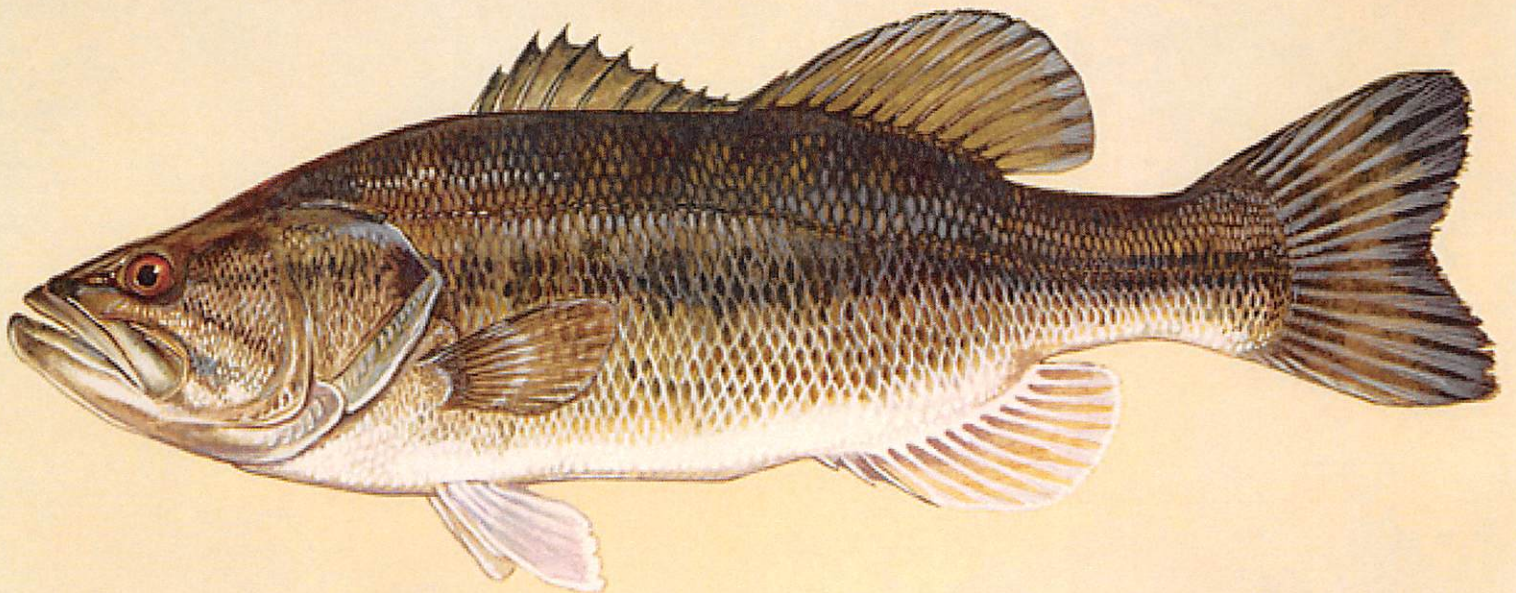
YATES CENTER RESERVOIR

13" - 18" SLOT LIMIT - 5 PER DAY CREEL LIMIT

SOUTH OWL LAKE

18" MINIMUM LENGTH LIMIT - 5 PER DAY CREEL LIMIT

South Owl Lake has an excellent largemouth bass population. Man-made structures provide a good habitat and the restrictive length and creel limit protect the fish from overharvest.

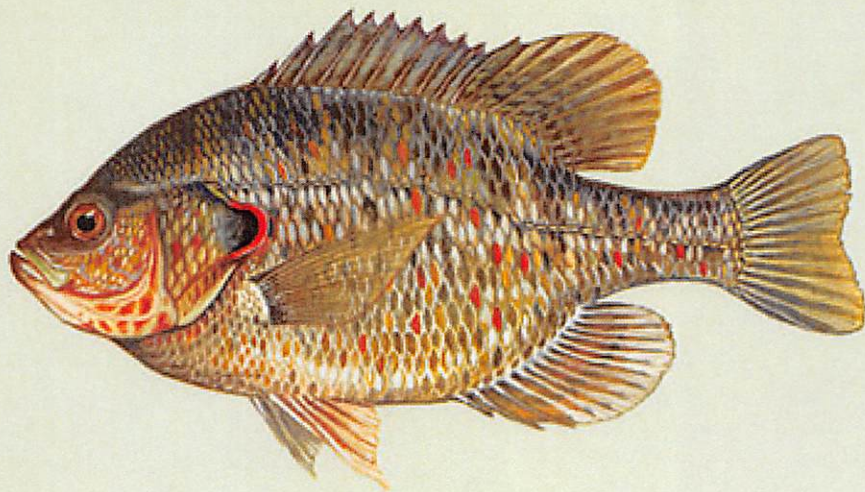


REDEAR SUNFISH

NO LENGTH LIMIT

NO CREEL LIMIT

The redear sunfish prefers deeper water than the blue gill, which it resembles in appearance, and is more difficult to catch. It has a narrow band of red on the gill cover lobe and usually shows vertical barring. These fish interrupt the life cycle of some common fish parasites, enhance the panfish community, and offer a challenge to anglers. They are much less abundant than the bluegill, but have been caught up to one pound.

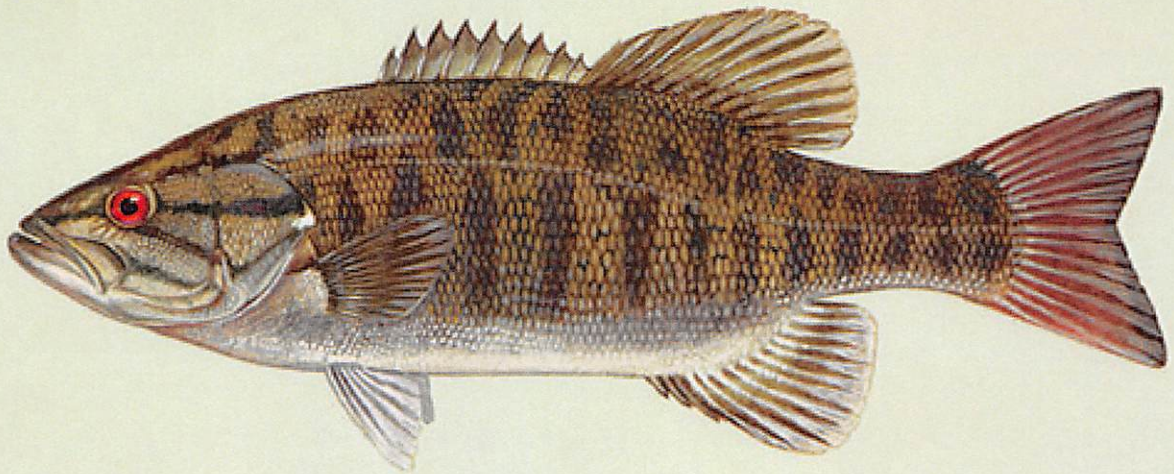


SMALLMOUTH BASS

18" LENGTH LIMIT

1 PER DAY CREEL LIMIT

YC Reservoir has a small population of smallmouth bass. They can be found most commonly on the dam area and around rocky points.

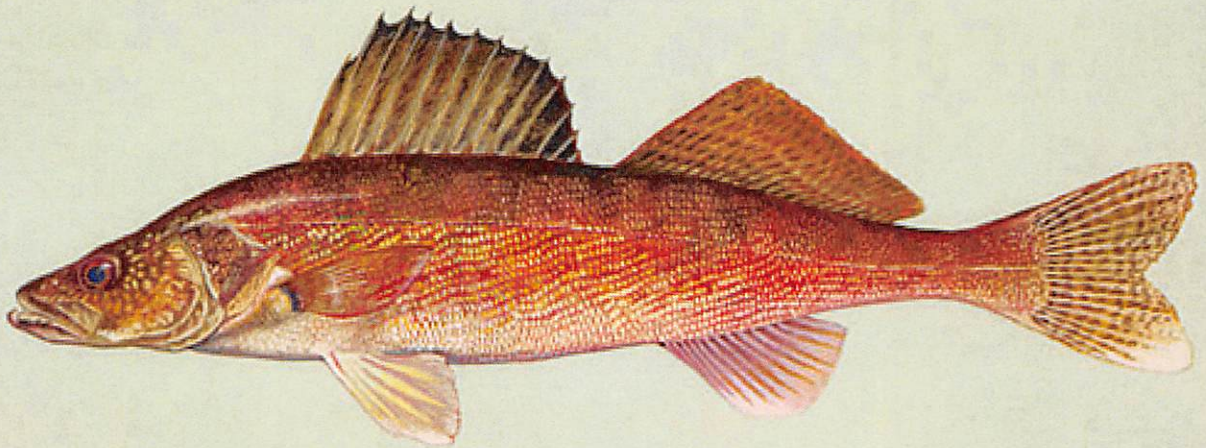


WALLEYE

15" MINIMUM LENGTH LIMIT

2 PER DAY CREEL LIMIT

The walleye population is very good. The restrictive length and creel limits protect them from overharvest and allow them to grow to larger sizes.



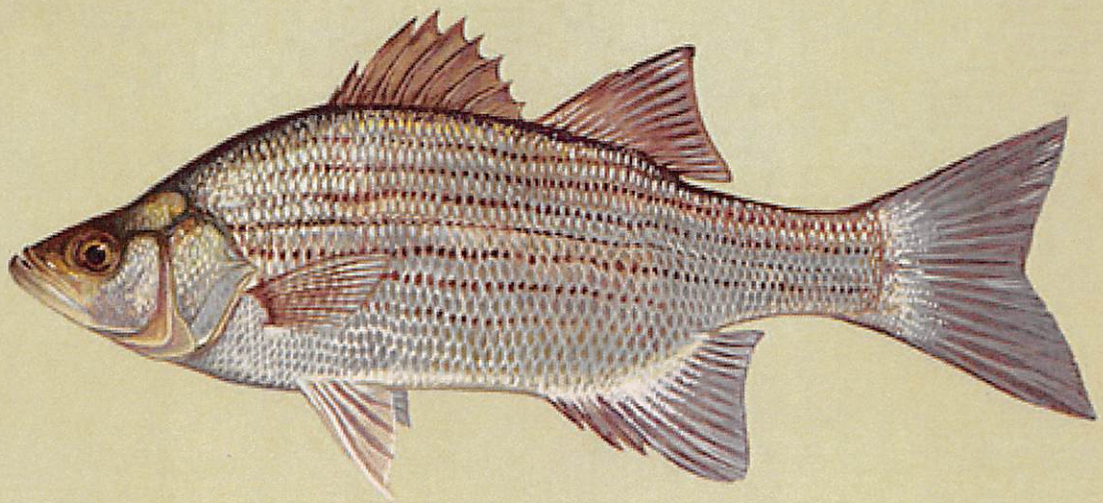
WIPER

18" MINIMUM LENGTH LIMIT

2 PER DAY CREEL LIMIT

Perhaps one of the best fighting fish in Kansas waters, the wiper is the cross between a white bass and a striped bass. The wipers are also trained to feed on dry pellets which allow them to reach a very large size.

Wipers are commonly caught on artificial bait and provide excellent catch and release fishing before they reach the length limit.



YELLOW PERCH

YC RESERVOIR

10" LENGTH LIMIT - 5 PER DAY CREEL LIMIT

There were 1,150 adult yellow perch stocked in 2004. These perch were trained to eat dry feed. This was an experimental program to provide fishing during cooler times of the year and provide a fish that has excellent eating qualities. The yellow perch is now reproducing in the reservoir.

